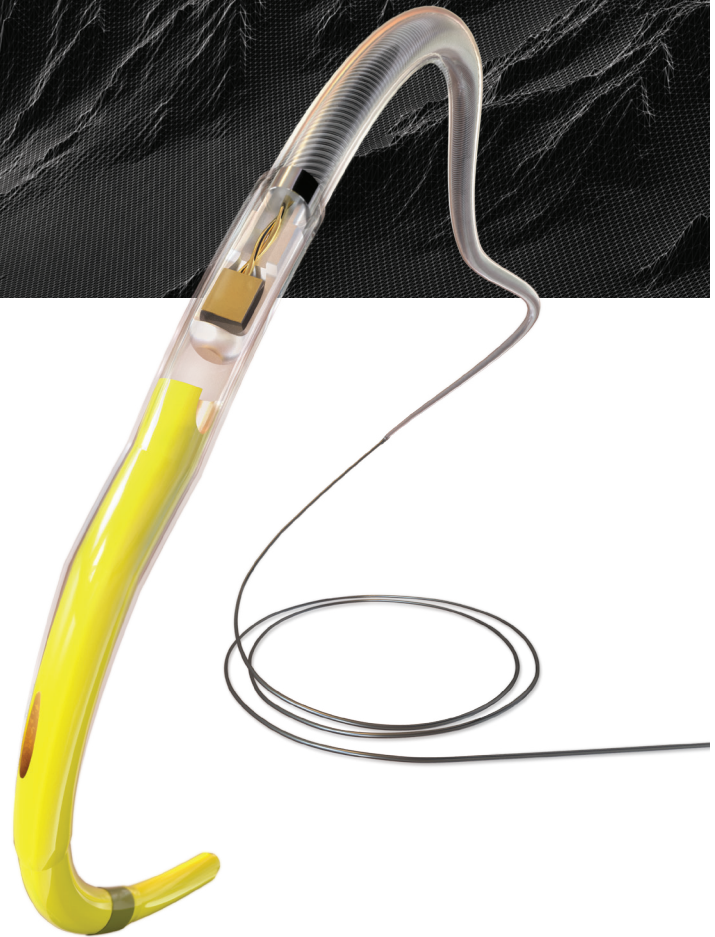


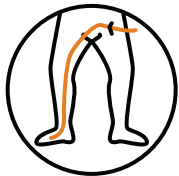
## Infraredx Clarispro

is the only extended bandwidth catheter available bringing you a crisper image and greater depth of field than any other HD-IVUS catheter on the market. Sharper images allow for easier identification of lumen, determining presence of plaque, and overall better visual of the vessel structure.

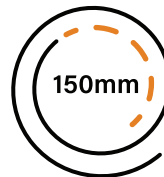
The impressive pushability, deliverability, and extended working length of the Infraredx Clarispro HD-IVUS are ideal for peripheral use.



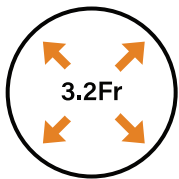
### Key Features



**Longest working length (160cm)**  
for reaching distant peripheral imaging sites



**Extended pullback length (150mm)**  
for maximizing imaging in a single scan



**Low crossing profile (3.2Fr)**  
for accessing hard-to-reach places like the tibial arteries



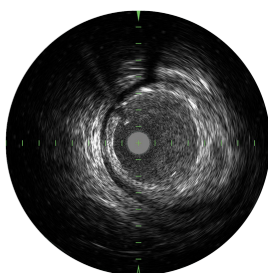
**Fast pullback speed (up to 20x)**  
saving time and making each procedure more efficient



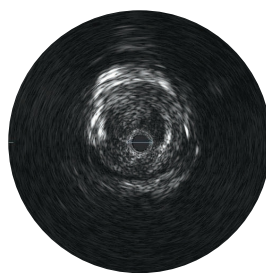
**No additional accessories required**  
for greater savings and more efficient workflow



**Best-in-class image clarity**  
to determine optimal plaque modification therapy

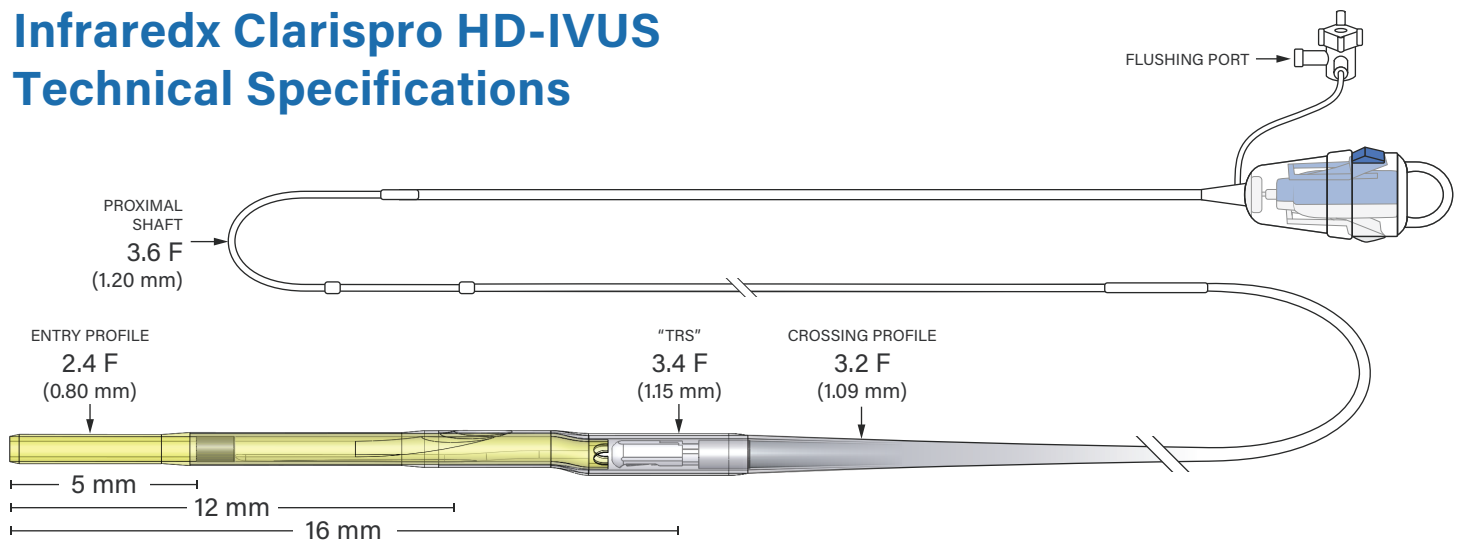


**Clarispro IVUS Image**  
35-65 MHz extended bandwidth



**Competitor IVUS Image**  
20 MHz

# Infraredx Clarispro HD-IVUS Technical Specifications



## Physical Parameters

Working Length	Hydrophilic Coating	Tip-to-IVUS Image	Diameter of Catheter			Guiding Sheath/ Catheter Compatibility (Minimum Inside Diameter)	Optimal Guide Wire Size
			Entry Profile	Crossing Profile	Proximal Shaft		
160 cm	50 cm	16 mm	2.4 F (0.80 mm)	3.2 F (1.09 mm)	3.6 F (1.20 mm)	6F (0.67 in)	0.014 in (0.36 mm)

## Imaging Parameters

IVUS Frequency Range	Maximum Image Diameter	Motorized Pullback	Motorized Live IVUS	Imaging Length	Indicated Vessels
35-65 MHz	16 mm	0.5, 1.0, 2.0 mm/s	0.0, 2.0, 10.0 mm/s bi-directional	150 mm	coronary and peripheral vessels, excluding cerebral vessels*

## Ordering Information

Catalog Number	Description	GTIN
TVC-E195-42	Infraredx Clarispro 35-65 MHz HD-IVUS Catheter	00857595006180

*\*The Makoto Intravascular Imaging System™ is intended for ultrasound examination of coronary and peripheral intravascular pathology. Intravascular ultrasound imaging is indicated in patients who are candidates for transluminal coronary and peripheral interventional procedures. The System is not indicated for use in the cerebral vessels. See product instructions for full product description, contra-indications, warnings, and instructions.*

## Increase the Capabilities of Your Makoto™ System

Infraredx Clarispro HD-IVUS works seamlessly with the Makoto Intravascular Imaging System – an imaging platform that benefits your whole practice to improve care for your patient’s polyvascular disease. The Makoto system is also compatible with the Dualpro IVUS+NIRS catheter to provide the only comprehensive coronary assessment tool FDA cleared to identify patients and lesions at increased risk of major adverse cardiac events.



**NIPRO MEDICAL CORPORATION**  
200 Crossing Blvd., Bridgewater, NJ 08807  
T: +1 (908) 393-7030  
www.nipro.com | info@nipromed.com

© 2022 Nipro Medical Corp. All Rights Reserved.  
Clarispro HD-IVUS is manufactured by Infraredx and distributed by Nipro Medical Corporation.  
NMC-LBL-0241\_26 August 2022-US-EN