


ApertaTM NSE
PTA
Balloon Dilatation Catheter



peripheral scoring

 **NIPRO**

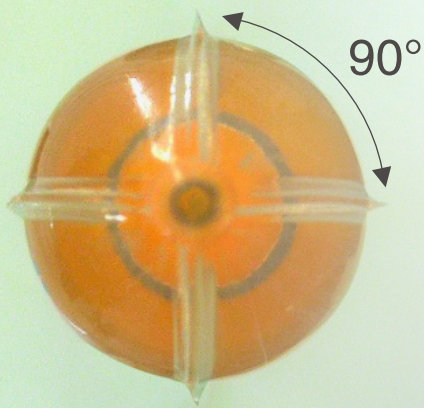


For peripheral arteries and arteriovenous dialysis fistula

The Aperta NSE PTA addresses the clinical needs of peripheral artery disease associated with higher rates of uncontrolled dissections, and inadequate luminal expansion. Through an innovative designed catheter that concentrates the dilative force along 4 integrated scoring elements, a more predictable luminal expansion, lower rate of uncontrolled dissections can be achieved.

 **Aperta** TM
NSE
PTA
Balloon Dilatation Catheter

FEATURES



Integrated elements

4 scoring elements
0.0155" (0.39mm) in height
Positioned 90° apart

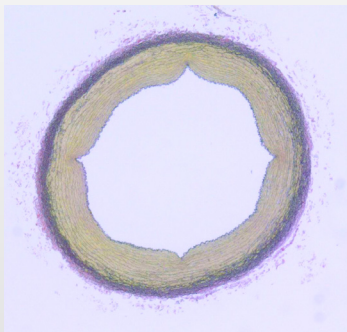
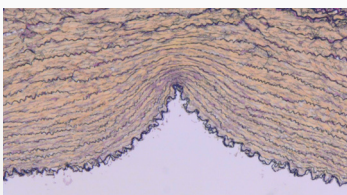
HP scoring balloon

Utilizes a low-compliant balloon platform
RBP is set at 20atm (Ø4.0-6.0mm)



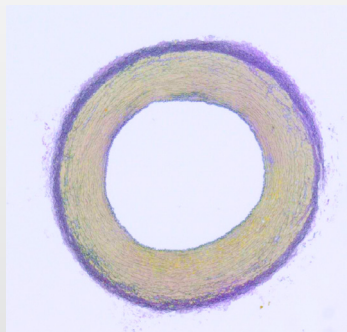
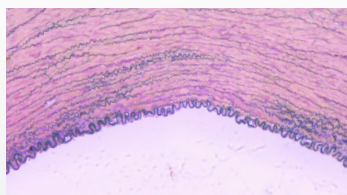
Aperta NSE PTA

4.00 x 40mm



Mustang

4.00 x 40mm



Scoring performance comparison

Test method:

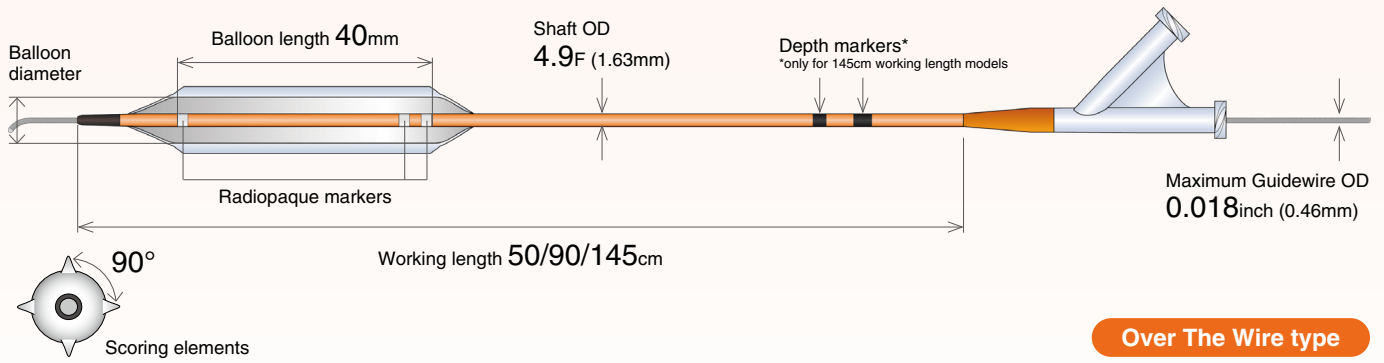
The animal vessel was dilatated using a single inflation of Aperta NSE PTA and Mustang. Inflation time was 30 seconds at nominal pressure.

Results:

The 4 integrated scoring elements of Aperta NSE PTA facilitated scoring effects to the vessel at nominal pressure.

*Data based on in-house testing

CATHETER DESIGN



Over The Wire type

COMPLIANCE CHART

Inflation pressure		Balloon diameter (mm)				
atm	kPa	4.0mm	5.0mm	6.0mm	7.0mm	8.0mm
2	2x10 ²	3.69	4.50	5.31	6.06	6.86
4	4x10 ²	3.78	4.61	5.45	6.27	7.18
6	6x10 ²	3.87	4.73	5.62	6.56	7.50
8	8x10 ²	3.97	4.85	5.77	6.78	7.76
10	10x10²	4.07	4.97	5.91	6.96	7.97
11	11x10 ²	4.10	5.02	5.97	7.03	8.05
12	12x10 ²	4.14	5.06	6.02	7.08	8.11
13	13x10 ²	4.17	5.10	6.06	7.15	8.18
14	14x10²	4.19	5.14	6.10	7.20	8.25
15	15x10 ²	4.22	5.17	6.14	7.25	8.31
16	16x10 ²	4.26	5.20	6.17	7.30	8.38
17	17x10 ²	4.29	5.23	6.21	7.36	8.45
18	18x10 ²	4.32	5.25	6.25		
19	19x10 ²	4.34	5.28	6.28		
20	20x10²	4.37	5.31	6.32		
21	21x10 ²	4.40	5.34	6.36		
22	22x10 ²	4.43	5.37	6.41		
23	23x10 ²	4.46	5.40	6.45		
24	24x10 ²	4.48	5.43	6.48		

NP RBP

ORDERING INFORMATION

Model no.	Balloon diameter	Balloon length	Working length	Shaft OD	Min. introducer sheath
AW18-05040040	4.0mm	40mm	50cm	4.9F (1.63mm)	5F
AW18-05050040	5.0mm				6F
AW18-05060040	6.0mm				5F
AW18-05070040	7.0mm				6F
AW18-05080040	8.0mm				5F
AW18-09040040	4.0mm				90cm
AW18-09050040	5.0mm	6F			
AW18-09060040	6.0mm	5F			
AW18-09070040	7.0mm	6F			
AW18-09080040	8.0mm	5F			
AW18-14540040	4.0mm	145cm	145cm	4.9F (1.63mm)	
AW18-14550040	5.0mm				6F
AW18-14560040	6.0mm				5F
AW18-14570040	7.0mm				6F
AW18-14580040	8.0mm				5F

Model no.	Balloon diameter	Balloon length	Working length	Shaft OD	Min. introducer sheath
AA18-05040040	4.0mm	40mm	50cm	4.9F (1.63mm)	5F
AA18-05050040	5.0mm				6F
AA18-05060040	6.0mm				5F
AA18-05070040	7.0mm				6F
AA18-05080040	8.0mm				5F
AA18-09040040	4.0mm				90cm
AA18-09050040	5.0mm	6F			
AA18-09060040	6.0mm	5F			
AA18-09070040	7.0mm	6F			
AA18-09080040	8.0mm	5F			



Aperta NSE PTA Balloon Dilatation Catheter
 Manufacturer: Goodman Co., Ltd.

- ▶ Please consult your sales representative regarding stock availability.
- ▶ Aperta NSE is a trademark of Goodman Co., Ltd.
- ▶ Please refer to the Instructions For Use for further details regarding product use and specifications.

